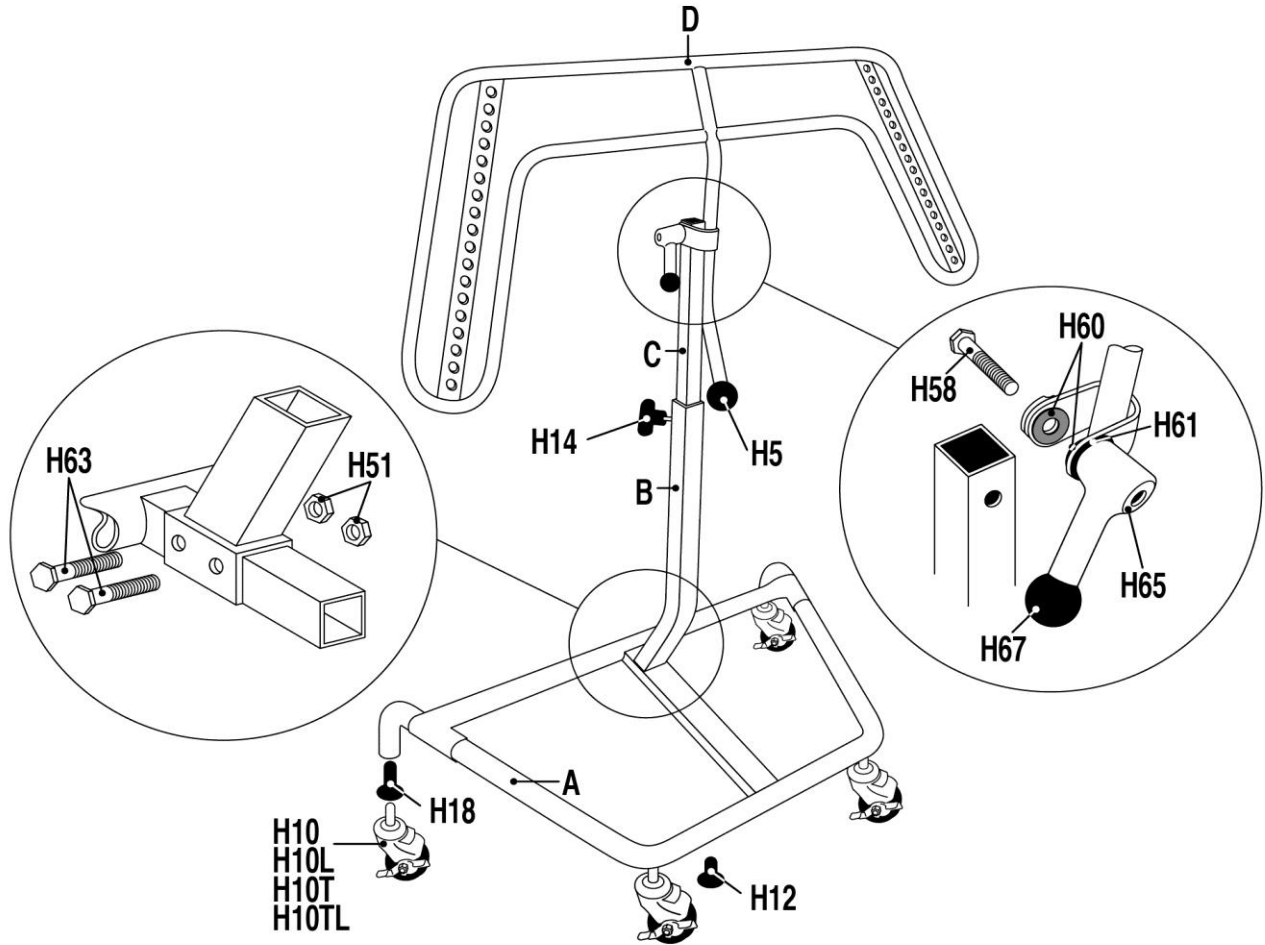


WT10 WING THING - PARTS AND ASSEMBLY GUIDE



Part Number	WT10 Hardware Parts Description	Qty.	Part Number	WT10 Hardware Parts Description	Qty.		
H5	1200908	Ball Handle	3	H60	1204075	WASHER, FRICTION	
H10	1200907	Brake Caster 3" dia., Grip Ring Stem	4	H61	1204076	NYLON WASHER 3/8	
H10-L	1204190	Brake Caster 4" dia., Grip Ring Stem	4	H63	1204219	HEX BOLT, 5/16-18 X 2-1/4	
HT10-T	1204191	Brake Caster 3" dia., Threaded Stem	4	H65	1204220	ALUM. KNOB INCL. BALL KNOB & WASHER	
HT10-TL	1204192	Brake Caster 4" dia., Threaded Stem	4	H67	1204221	BALL HANDLE, SMALL 3/8-16 STUD TYPE	
H12	1203999	Caster socket small (non threaded stem)	2	A	1204215	Base	1
H14	1200909	T-Handle 3/8-16 Stud	4	B	1204216	Upright	1
H18	1204197	CASTER SOCKET, MEDIUM, WT10 ONLY		C	1204217	Slider	1
H51	1204207	Nyloc Nut 5/16-18		D	1204067	Pivot bracket	1
H52	1204208	Hex Bolt 5/16 X 1-3/4		WT10 INCLUDED Extensions (NOT SHOWN)			
H58	1204073	HEX BOLT, 3/8-16 X 2		EX02S	1204071	EXTENSION BKT, PAIR W/HANDLES, 9" LONG	