



SWIVEL CASTER  
 6" DIAMETER WHEEL  
 7 1/2" MOUNT HT.  
 LOAD CAPACITY 1200 LBS  
 PER WHEEL  
 (2) REQ'D



LOCKING MECHANISM  
 (1) REQ'D



HEX HD BOLT  
 5/16-18 X 1"L  
 (8) REQ'D



HEX NUT  
 5/16-18 THREAD  
 (8) REQ'D

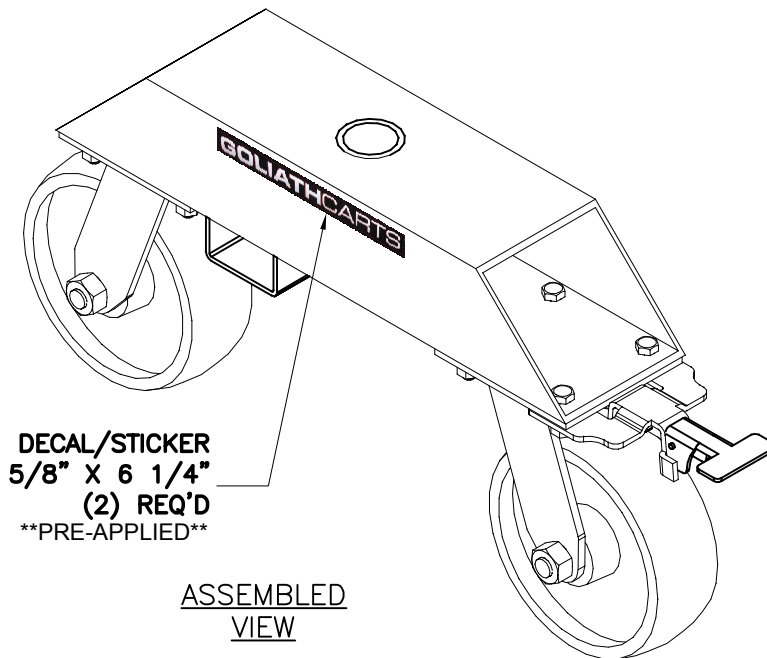
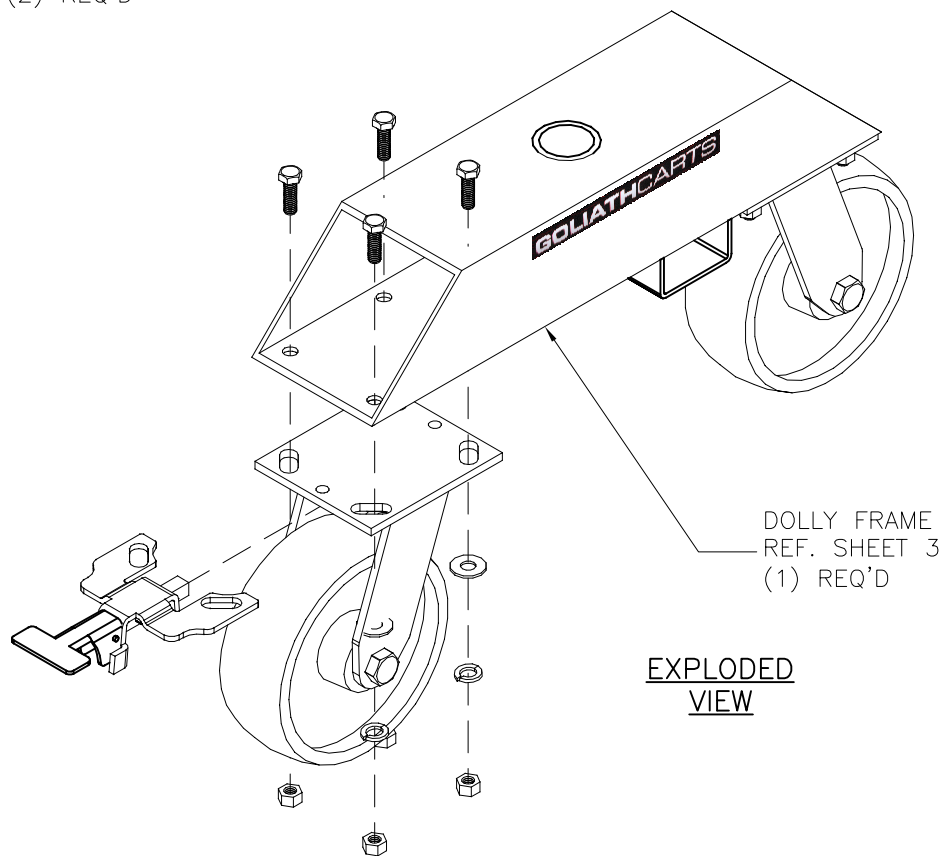


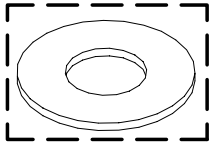
PLAIN FLAT WASHER  
 ø7/8"OD, ø3/8"ID  
 .0750" THICK  
 (8) REQ'D



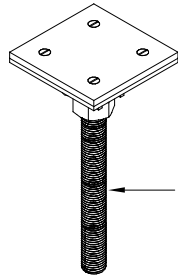
SPLIT LOCK WASHER  
 ø9/16"OD, ø5/16"ID  
 .0830" THICK  
 (8) REQ'D

1 SET =  
 (2) ASSEMBLIES

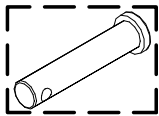




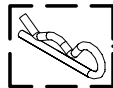
PLAIN FLAT WASHER  
 $\phi 3''$  OD,  $\phi 1 \frac{3}{8}''$  ID  
 .1520" THICK  
 (2) REQ'D



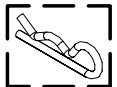
SUPPORT ADAPTER  
 REF. SHEET 7  
 (2) REQ'D



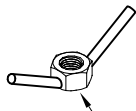
STEEL CLEVIS PIN  
 DIAMETER PIN  $\phi 5/16''$   
 USABLE LENGTH  $1 \frac{3}{8}''$   
 THROUGH HOLE  $\phi 5/32''$   
 (4) REQ'D



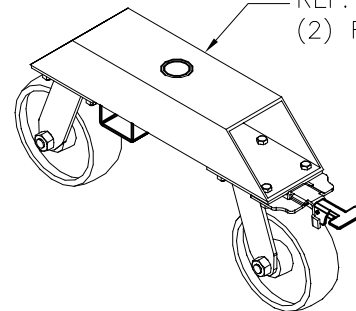
COTTER HAIRPIN  
 $\phi 11/64''$  WIRE DIAMETER  
 $3 \frac{3}{4}''$  LENGTH  
 FOR CLEVIS PIN  $\phi 1 \frac{1}{4}''$   
 (2) REQ'D



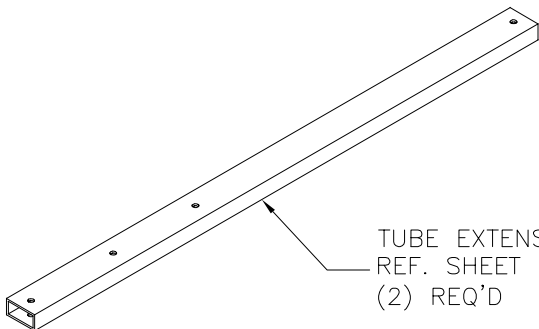
COTTER HAIRPIN  
 $\phi 5/64''$  WIRE DIAMETER  
 $1 \frac{1}{4}''$  LENGTH  
 FOR CLEVIS PIN  $\phi 1/4'' - 3/8''$   
 (4) REQ'D



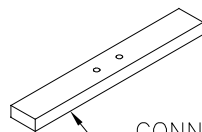
LOCKING NUT  
 REF. SHEET 6  
 (2) REQ'D



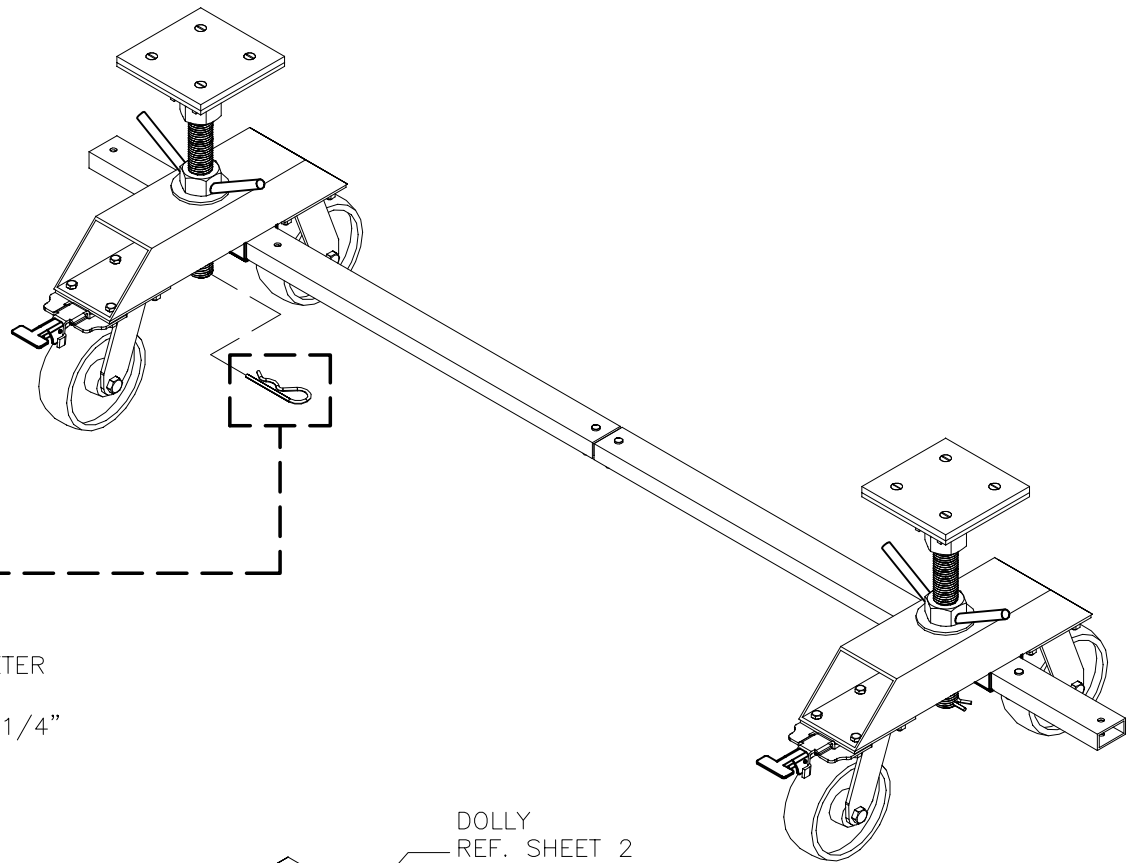
DOLLY  
 REF. SHEET 2  
 (2) REQ'D



TUBE EXTENSION  
 REF. SHEET 4  
 (2) REQ'D



CONNECTOR  
 REF. SHEET 5  
 (1) REQ'D



When finished, your fully assembled UD-4800 should look like this. To create a UD-9600, please follow the instructions on the "Connection Kit Assembly" document after following this one.

